



K-Othrine® 1% SC

Formerly Crackdown 1% SC



- Ideal for routine treatments
- Up to 12 weeks control
- Squeeze and pour pack
- Control of fleas, bed bugs etc.

Ideal for routine treatments

K-Othrine® 1% SC contains deltamethrin (10g/l), a synthetic pyrethroid. Deltamethrin is comprised of a single pure active isomer, which maximises insecticidal activity. It exhibits low mammalian toxicity.

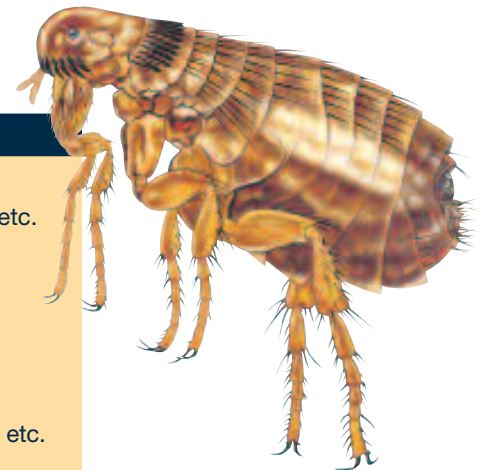
K-Othrine® 1% SC is a suspension concentrate, and is an ideal professional pest control product. It is a particulate suspension of solid deltamethrin and carrier particles in water. The particles are similar in size to those of the finest insecticidal emulsions but, unlike the emulsions, are not readily absorbed into surfaces. The insecticide particles remain exposed on surfaces and are readily available to the insects providing sustained residual activity.

It does not taint or cause staining and is photostable giving K-Othrine® 1% SC its residual activity. It is also virtually odourless.

Squeeze and pour pack

K-Othrine® 1% SC is a water based formulation and is supplied in a simple squeeze and pour bottle and mixed to water. Its fine particles do not block sprayers, due to the quality of the deltamethrin. There is no waste, just measure out exactly the amount needed for each treatment, add to water and stir.





Areas of Use

Domestic premises:

In and around buildings including houses, blocks of flats etc.

Public Buildings:

Continuously occupied areas (as band/spot or crack and crevice treatment only), hospitals, hotels, public baths, municipal buildings, churches, halls, community centres, cinemas etc.

Food Handling:

Processing, food manufacture, kitchens, slaughter houses etc.

Storage:

Food retailers, warehouses, raw material stores etc.

Food Preparation:

Restaurants, commercial kitchens etc.

Aircraft:

Aircraft galleys AMS 1450A, cabins etc.

On board ship:

Accommodation and food preparation areas.

Insects Controlled



K-Othrine® 1% SC is suitable for the control, by surface spray and residual activity, of a wide range of Public Hygiene insect pests including:

Cockroaches, ants, flies, mosquitoes, fleas, bed bugs, moths, beetles, silverfish, earwigs, booklice.

Health and Safety



Health and safety equipment.

Application Rate

Insects	Treatment	Dilution rate	
		K-Othrine	Water
Crawling insects	Initial	150ml	5 litres
Public health insects: Cockroaches, bed bugs, fleas	Routine	75ml	5 litres
Stored product insects	Routine	150ml	5 litres
Flying insects: Flies, mosquitoes, moths	Routine	75ml	5 litres

Apply to just short of run-off on most surfaces i.e. at a rate of 5 litres/100 m² of surface.

K-Othrine® 1% SC is an ideal surface spray for use in Public Hygiene.

USE BIOCIDES SAFELY

ALWAYS READ THE LABEL AND PRODUCT INFORMATION BEFORE USE

K-Othrine® contains deltamethrin 1.055 % w/w. HSE 5097. PCS 90444. K-Othrine® is a registered trademark of Bayer.

© Copyright of Bayer 2007 – All rights reserved.

This product guide is not to be construed a legally binding document. Specifications of the products and representations and warranties shall be exclusively dealt with in the distribution and/or sales contracts.

MSDS and label text information is available for download at www.pestcontrol-expert.com