

# Coopex® Smokes

Fast, easy and thorough disinfestations

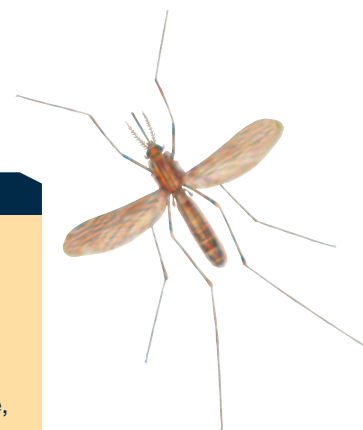
- Ready to use
- No equipment needed
- Easy, quick and simple

## Ready to use

The Ready-to-use formulation involves no mixing or specialist equipment. Coopex® Smokes are biodegradable products which have highly penetrative smoke for fast, efficient control with no risk of environmental contamination. The clean smoke leaves no unsightly deposit, tainting or residual odour.

Coopex® Smokes contain permethrin, a synthetic pyrethroid which is well proven for use in pyrotechnic formulations. Permethrin exhibits low mammalian toxicity, minimising opportunity for operator contamination.





### Areas of Use

Coopex® Smokes are ready-to-use for:  
 The control of flying insects.  
 As an aid to the control of crawling insects.  
 General insect disinfestation in warehouses, foodstores and public health situations.  
 Awkward spaces where spraying equipment is difficult to use, for example, inside machinery, in lofts and in very tall structures.

### Insects Controlled



Coopex® Smokes are effective products offering rapid flushout, knockdown and kill, targeted for the control of a wide range of Public Hygiene insect pests to include:

Flies (including house and cluster), mosquitoes, moths and wasps and aids the control of ants, fleas, bed bugs, cockroaches and beetles.

### Health and Safety



Health and safety equipment.

### Application Rate

Two generators are available:  
 COOPEX MAXI SMOKE GENERATOR evolving ca 2.5 g permethrin.  
 COOPEX MINI SMOKE GENERATOR evolving ca 0.3 g permethrin.

Insects	Volume treated m <sup>3</sup>	
	Coopex Maxi	Coopex Mini
Flying insects	Up to 1000m <sup>3</sup>	Up to 120m <sup>3</sup>
Fleas and bed bugs	250	30
Ants, stored product insects and cockroaches	62.5	7.5

After preparing the area for treatment simply tear off the tag, remove the container cap, place on a fireproof base of approximately 300 x 300 mm and light the igniter using a match.

### USE BIOCIDES SAFELY

#### ALWAYS READ THE LABEL AND PRODUCT INFORMATION BEFORE USE

Coopex® Mini and Maxi Smoke Generators contain permethrin (25:75 cis : trans isomeric ratio) 13.35 % w/w. HSE 5130/5131. PCS 90432/90433. Coopex® is a registered trademark of Bayer.

© Copyright of Bayer 2007 – All rights reserved.

This product guide is not to be construed a legally binding document. Specifications of the products and representations and warranties shall be exclusively dealt with in the distribution and/or sales contracts.

**MSDS and label text information is available for download at [www.pestcontrol-expert.com](http://www.pestcontrol-expert.com)**