

# Coopex® Insect Powder

The insecticidal powder for harbourages



- Recognised quality formulation
- Broad spectrum insect control (offering rapid knockdown and kill against a wide range of insect pests)
- Long lasting activity

## Recognised quality formulation

Coopex® Insect Powder is easy and ready to use and comes in a re-sealable pack. It is a biodegradable product with no risk of environmental contamination. It is ideal to use where liquid-based formulations are unsuitable. Coopex® Insect Powder is odourless, non-tainting and non-staining.

Coopex® Insect Powder contains permethrin, a synthetic pyrethroid, which is well proven for its activity against a wide range of insect pests. Permethrin exhibits low mammalian toxicity and it is not classified in the European Community on the basis of its toxicity. Permethrin is photostable giving Coopex® Insect Powder its residual activity.



### Areas of Use

Coopex® Insect Powder is particularly valuable for the treatment of:

Inaccessible or dead spaces, e.g. voids behind panelling, ducting etc.

It can be applied in premises where people live or work and where food stuffs are stored, prepared or eaten.

Suited for use where the application of liquid sprays may be variously restricted because of corrosion or other damage to surfaces, the proximity of electrical equipment or flammability.

#### Domestic premises:

In and around buildings including houses, blocks of flats etc.

#### Food Handling:

Processing, food manufacture, kitchens, slaughter houses etc.

#### Storage:

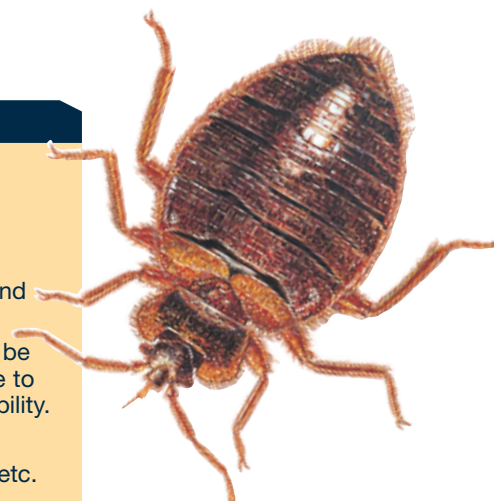
Food retailers, warehouses, raw material stores etc.

#### Food Preparation:

Restaurants, commercial kitchens etc.

#### Public Buildings:

Continuously occupied areas (as band/spot or crack and crevice treatment only), hospitals, hotels, public baths, municipal buildings, churches, halls, community centres, cinemas, animal housing etc.



### Insects Controlled



Coopex® Insect Powder is suitable for the control of a wide range of Public Hygiene insect pests to include:

Bed bugs, fleas, wasps, ants, beetles, moths, sucking lice, silverfish, cockroaches and woodlice.

### Health and Safety



Health and safety equipment.

### Application Rate

Coopex® Insect Powder can be applied liberally to and around ant and wasp nests. Alternatively it may be applied as a band treatment around structures and furnishings, to insect harbourages e.g. cracks and crevices and into voids or to localised areas known to be infested e.g. animal haunts infested with fleas.

Coopex® Insect Powder is an ideal component of integrated treatments where it complements the use of e.g. spray treatments.

### USE BIOCIDES SAFELY

#### ALWAYS READ THE LABEL AND PRODUCT INFORMATION BEFORE USE

Coopex® Insect Powder contains permethrin (25:75 cis:trans isomeric ratio) 0.5 % w/w. HSE 5052. Coopex® is a registered trademark of Bayer.

© Copyright of Bayer 2007 – All rights reserved.

This product guide is not to be construed a legally binding document. Specifications of the products and representations and warranties shall be exclusively dealt with in the distribution and/or sales contracts.

**MSDS and label text information is available for download at [www.pestcontrol-expert.com](http://www.pestcontrol-expert.com)**