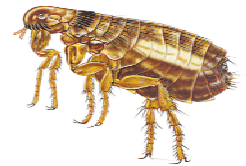




## Product Update May 2007 Flea Control with Ficam W® & K-Othrine®



Have you recently received calls about flea control? Do you think that flea control is a thing of the past? Well, think again, **Fleas** are back and can be a year-round pest.

There are about 2,000 species of fleas. They are generally described as 1-8 mm long; brownish in colour, body laterally compressed (streamlined) and covered with backward-directed bristles; piercing mouth parts; no wings, complete metamorphosis with egg, larvae, pupae and adult stages.

Adult fleas live exclusively as parasites feeding on the blood of their host animal and consequently they can be vectors of disease. Bubonic plague and murine typhus are examples of diseases spread by oriental rat fleas. Dog and cat fleas are intermediate hosts of tapeworms that can infect humans if ingested. Perhaps the most common complaint associated with flea infestations is the skin irritation caused by flea bites. In this article we will discuss cat flea, *Ctenocephalides felis*. It is the most common flea species encountered by PMP's.

### Control

#### a) Hygiene/management

Fleas are always closely associated with the host animal. Regular cleaning of their bedding in hot, soapy water will help reduce the eggs, larvae and pupae. Regular vacuuming of carpeting (several times a week) will remove eggs and the faecal material the larvae need for development. Also use a vacuum with a crack and crevice nozzle to clean the cracks between floorboards and skirting boards. Remember to ask the customer to vacuum under and around any piece of furniture that the animal may use. When finished vacuuming place the vacuum bag in an outside bin.

#### b) Insecticidal control

Insecticides can be used to treat infested premises. **Ficam W®** and **K-Othrine®** are excellent products to kill adult fleas found in and on carpeting and furniture. They can also be used to treat any crack or crevice that may be harbouring larvae and adults. **Ficam W®** and **K-Othrine®** should be combined with an insect growth regulator (IGR) to provide the best control. Pay particular attention to areas where the host animal spends time resting. Remember to inform the customer that they need to stay away from the area until the carpet has dried; this includes their pet(s).

#### c) Host treatments

Insecticidal products are available, which have been specifically formulated and registered for use on the host animals. Only these products should be applied to animals and care should be taken to follow the manufacturer's instructions.



# BACKED by BAYER™

For further information on Ficam® W & K-Othrine® visit:

[www.pestcontrol-expert.com](http://www.pestcontrol-expert.com)